

Wood River Evergreens

101 Woodville Road
 Hope Valley, RI 02832
 (800) 967-8733

fax: (401) 364-3737

e-mail: office@woodriverevergreens.com

Internet: www.woodriverevergreens.com



© Copyright Wood River Evergreens Inc. 1999

Secrets to Success

Genus of deciduous or evergreen shrubs and trees. The trees are grown mainly for their single (5-petaled) to double flowers and autumn colors; the shrubs for their autumn color, bark, flowers or fruit. All have oval to oblong leaves. Evergreen species tolerate sun or shade; deciduous species prefer full sun. All may be grown in any but waterlogged soil. Trim deciduous hedges after flowering, evergreen ones in early or mid-spring.

P. blireana: Bears double, pink flowers in mid-spring and has oval, purple leaves.

P. campanulata: Deciduous, spreading tree. Shallowly bell-shaped, deep rose-red flowers are produced from early to mid-spring, before or with oval, taper-pointed, dark green leaves. Fruits are small, rounded and reddish.

P. serrula: Deciduous, round headed tree. Has gleaming, coppery-red bark that peels. In late spring bears small, 5-petaled, white flowers amid oval, tapering, toothed, dark green leaves that turn yellow in autumn. Fruits are tiny, rounded and reddish brown.

P. tomentosa: Deciduous, bushy, dense shrub. Small, 5-petaled, pale pink flowers are produced from early to mid-spring before oval, slightly downy, dark green leaves appear. Fruits are spherical and bright red. Thrives in hot summers.



P. virginiana 'Shubert': Deciduous, conical tree. Produces dense spikes of small, star-shaped, white flowers from mid- to late-spring, followed by globose, dark purple-red fruits. Has oval, pale green, young leaves, becoming deep reddish purple in summer.

FACTOIDS

- Small white flowers usually appear in May.
- Excellent for dry soil conditions
- Can tolerate salt in both soil and spray forms.

Common Name:

Beach Plum

Scientific Name:

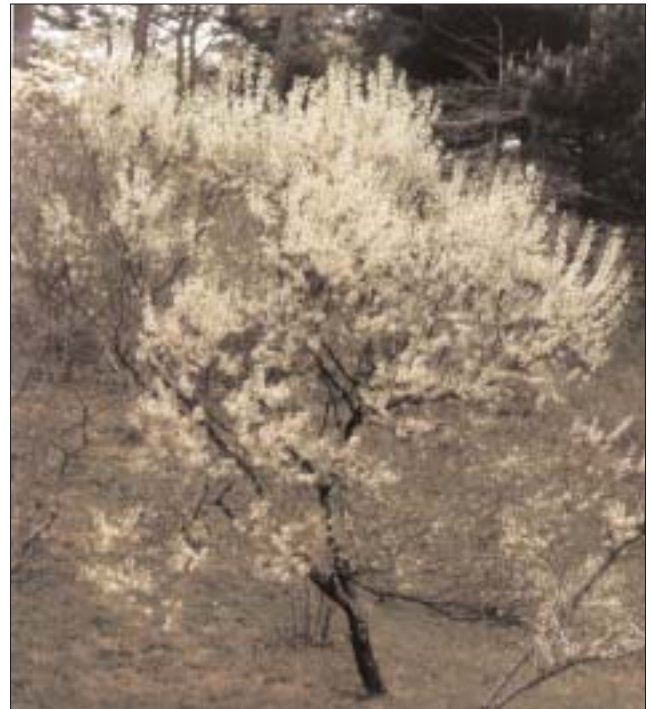
Prunus maritima

Stock Number:

P670

Category:

Deciduous shrub



Prunus: Fruit trees for the beach

Most parts of the country don't use the Prunus genus in contemporary landscapes but along the Atlantic Coast the shrub provides explosions of white spring flowers.

The ripe August fruits, changing from yellow and orange to purple or red, are favorites for jams and jellies.

Can form large

colonies but sometimes serve as an accent element when used alone and pruned artistically.

It's popular along the coast because it appears to thrive with little care in sandy, salt-laden conditions making it ideal for beach conditions.

This genus contains both evergreen and deciduous trees and shrubs.

Planting	Spread Size	Soil	Sun	Feeding	Pruning
Cuttings and seed.	H: 6 - 12' S: indefinite	Can handle dry, sandy conditions.	Like full sun to partial shade.		After flowering.